
Veronte Updater

Release 6.8.47

Embention

2023-08-07

CONTENTS

1 Quick start	3
1.1 Download	3
1.2 Installation	3
2 Operation	9
2.1 Update process	10
2.1.1 Advanced Tools	20
2.1.1.1 File system	21
2.1.1.2 Upload files	23
2.1.1.3 Flash tool	27
2.1.1.4 Flash Remote ID	29



Veronte Updater is the application used to update software version of Embention devices.

QUICK START

Veronte Updater updates the software version of almost all Embention devices, being **Veronte Autopilot 1x** most of the time.

Once **Veronte Autopilot 1x** has been detected on [Veronte Link](#), download and install **Veronte Updater**.

1.1 Download

Once a Veronte device has been purchased, a GitHub release should be created for the customer with the application.

To access to the release and download the software, read the [Releases section](#) of the **Joint Collaboration Framework** manual.

1.2 Installation

To install Veronte Updater on Windows, execute VeronteUpdater.exe and follow the steps:

1. Click on Next:

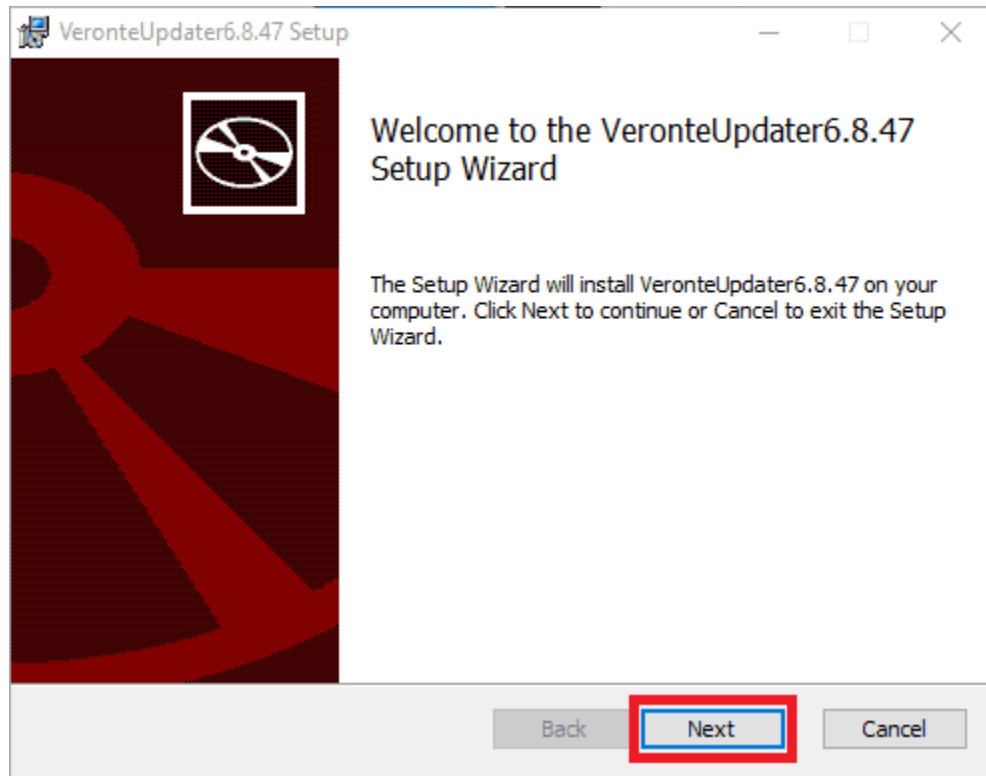


Fig. 1: Windows Installation - Step 1

2. Select the directory where where the software will be installed (with the **Change** button), then click on Next:

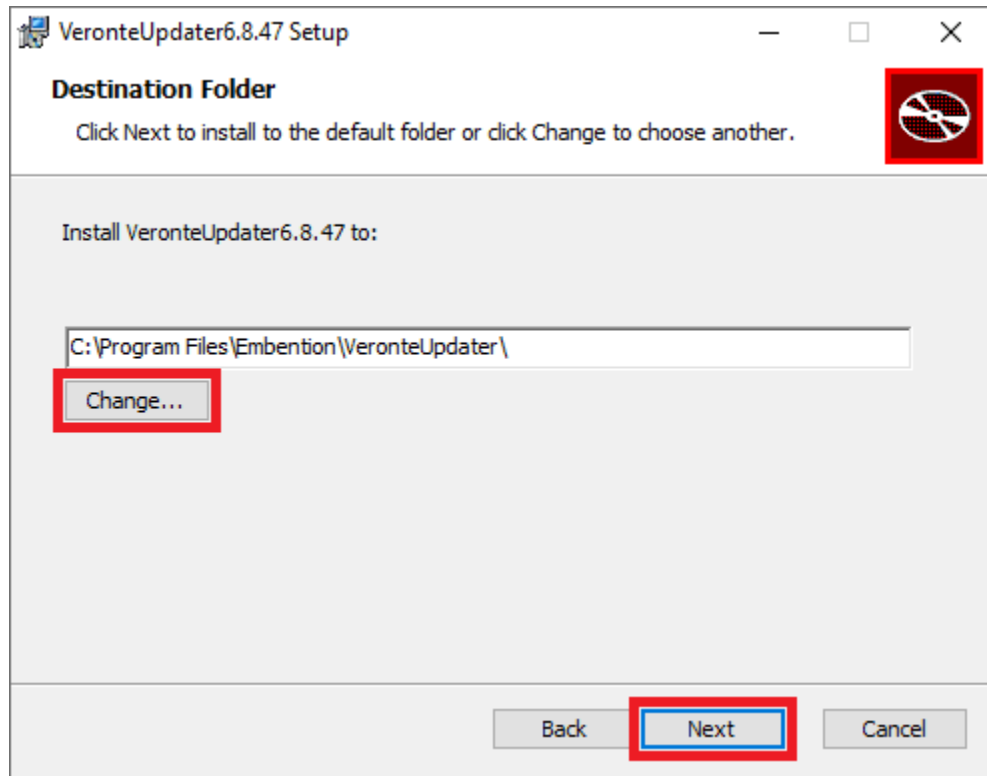


Fig. 2: Windows Installation - Step 2

3. Finally, click on **Install** (administrator rights are needed):

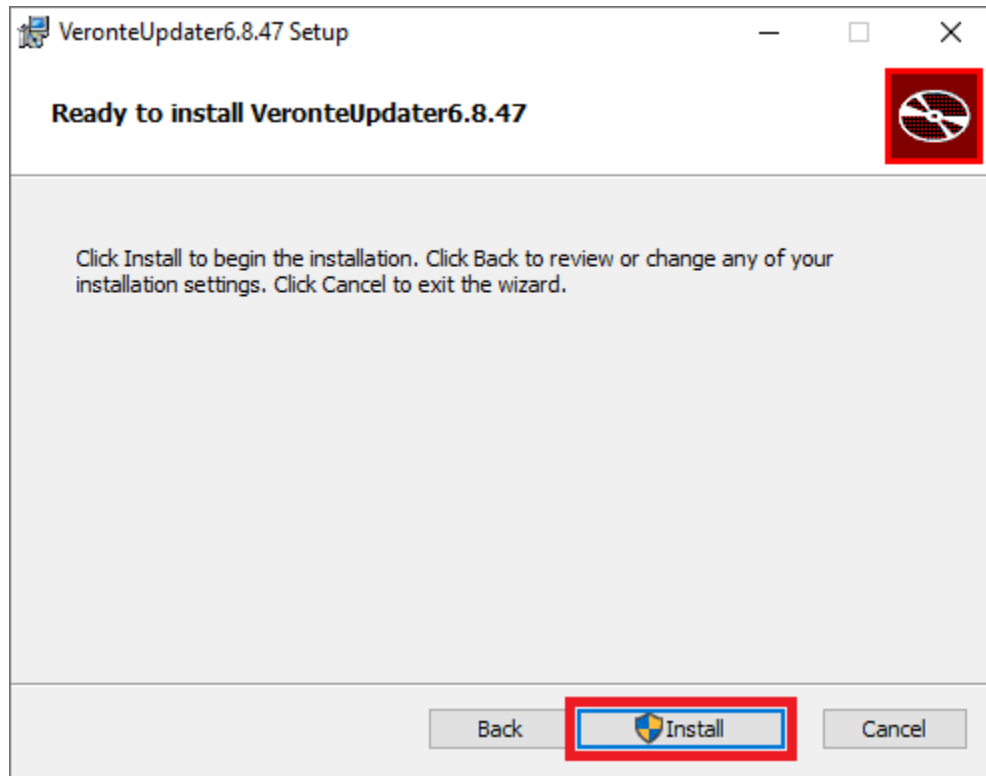


Fig. 3: Windows Installation - Step 3

4. After a few seconds, the following window will appear indicating the process was succesful. Click on **Finish**:

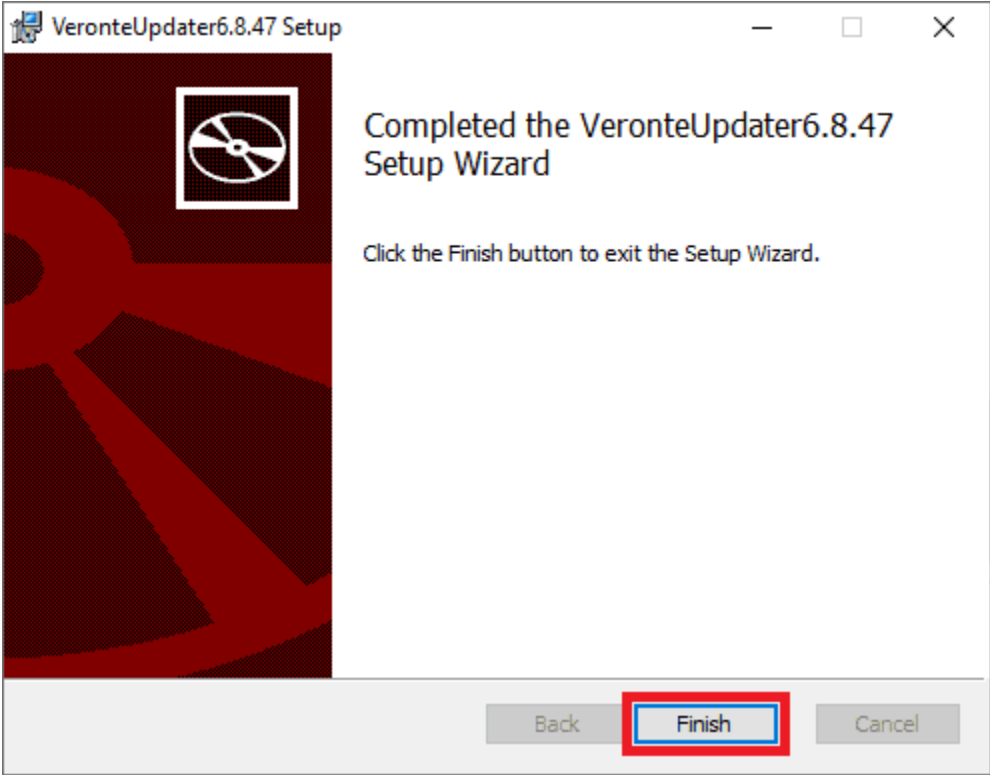


Fig. 4: Windows Installation - Step 4

Note: In case of any issue during installation, please disable Windows Defender and Firewall. To disable Firewall, go to “Control Panel” and “Firewall of windows”, then click on “Turn off”.

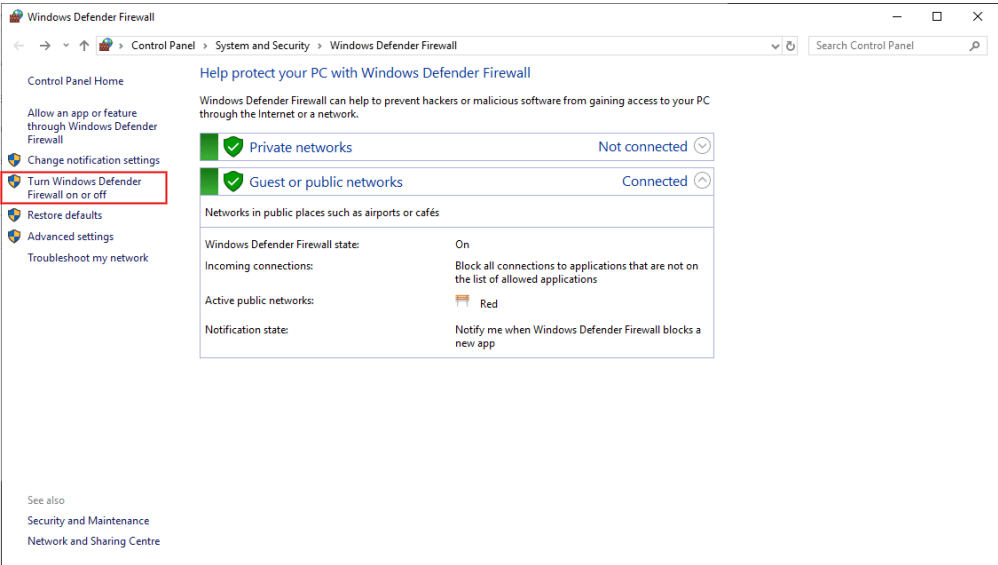


Fig. 5: Windows Firewall Menu

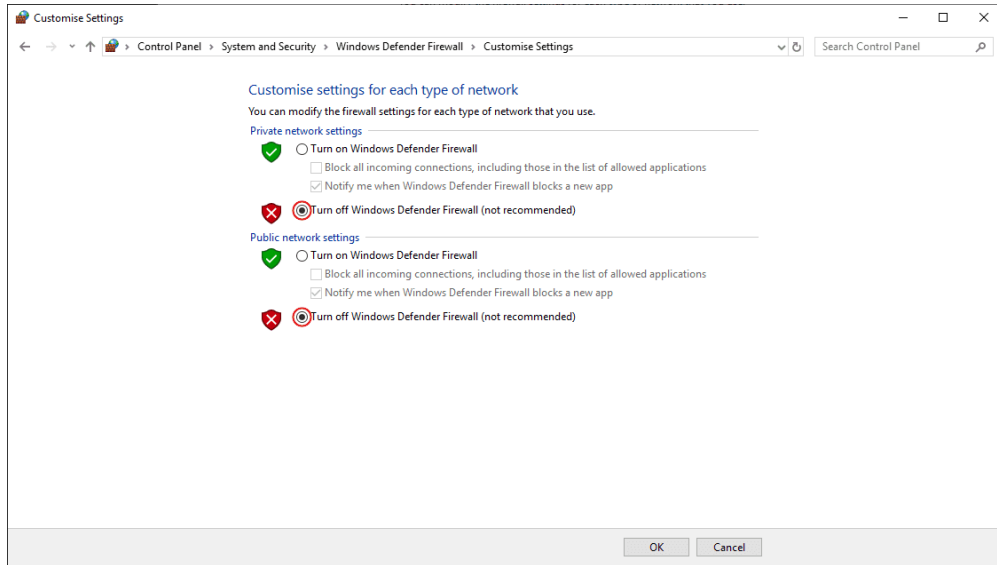


Fig. 6: Turn Off Firewall

OPERATION

Once the installation is finished, open **Veronte Updater** and the following main menu will appear:

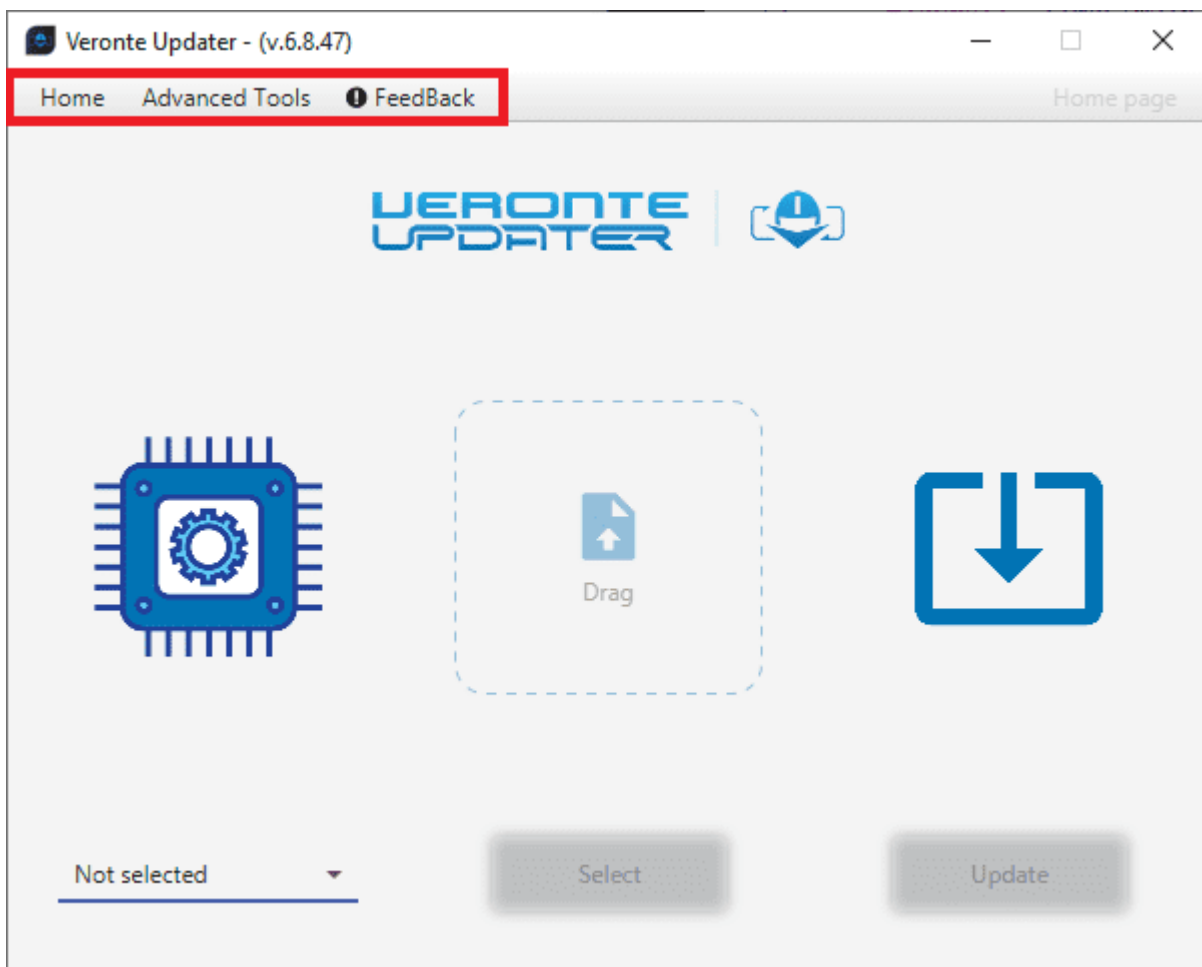


Fig. 1: Veronte Updater - Main menu

Users may notice that there are some tabs at the top of the menu:

- **Home:** This is the main tab, where the whole *update process* takes place.
- **Advanced Tools:** Clicking on it displays a drop-down menu with several options that can be carried out on the connected device: *File system*, *Upload files*, *Flash tool* and *Flash Remode ID*.

For more information, refer to *Advanced tools section*.

- **Feedback:** Users can report a problem they have encountered by **creating an issue in their own ‘Joint Collaboration Framework’**. The ‘Download’ button downloads a zipped folder with the current device configuration and more information needed for Embention to resolve the issue. It is advisable to attach this folder when creating the issue.

Note: The user’s ‘Joint Collaboration Framework’ is simply a **own Github repository for each customer**.

If the user has any questions about this Joint Collaboration Framework, please see the [Joint Collaboration Framework user manual](#).

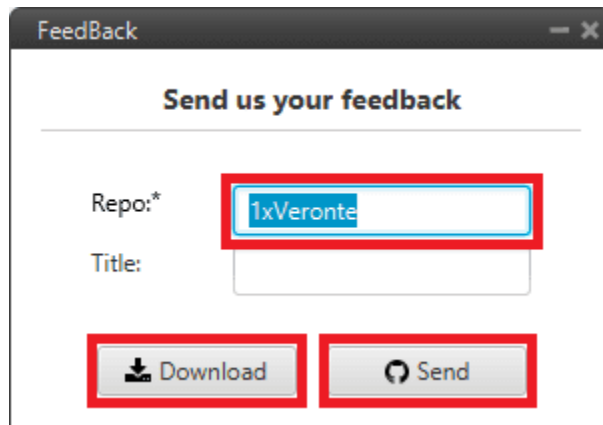


Fig. 2: Feedback

2.1 Update process

Follow the steps below to carry out the upgrade process of a Veronte Autopilot 1x:

Important:

- Since the most frequently updated device is **Veronte Autopilot 1x**, this user manual uses this device as an example. However, all other devices require the same procedure.
- Steps marked with * are not necessary if the upgrade version does not change the first two numbers (major and minor).

For example, they are not required from 6.8.116 to 6.8.126 but they are necessary from 6.4.90 to 6.8.126.

1. Connect the device (to be updated) to a computer with [Veronte Link](#).

Then, open **Veronte Updater** and select the connected device in the marked area:

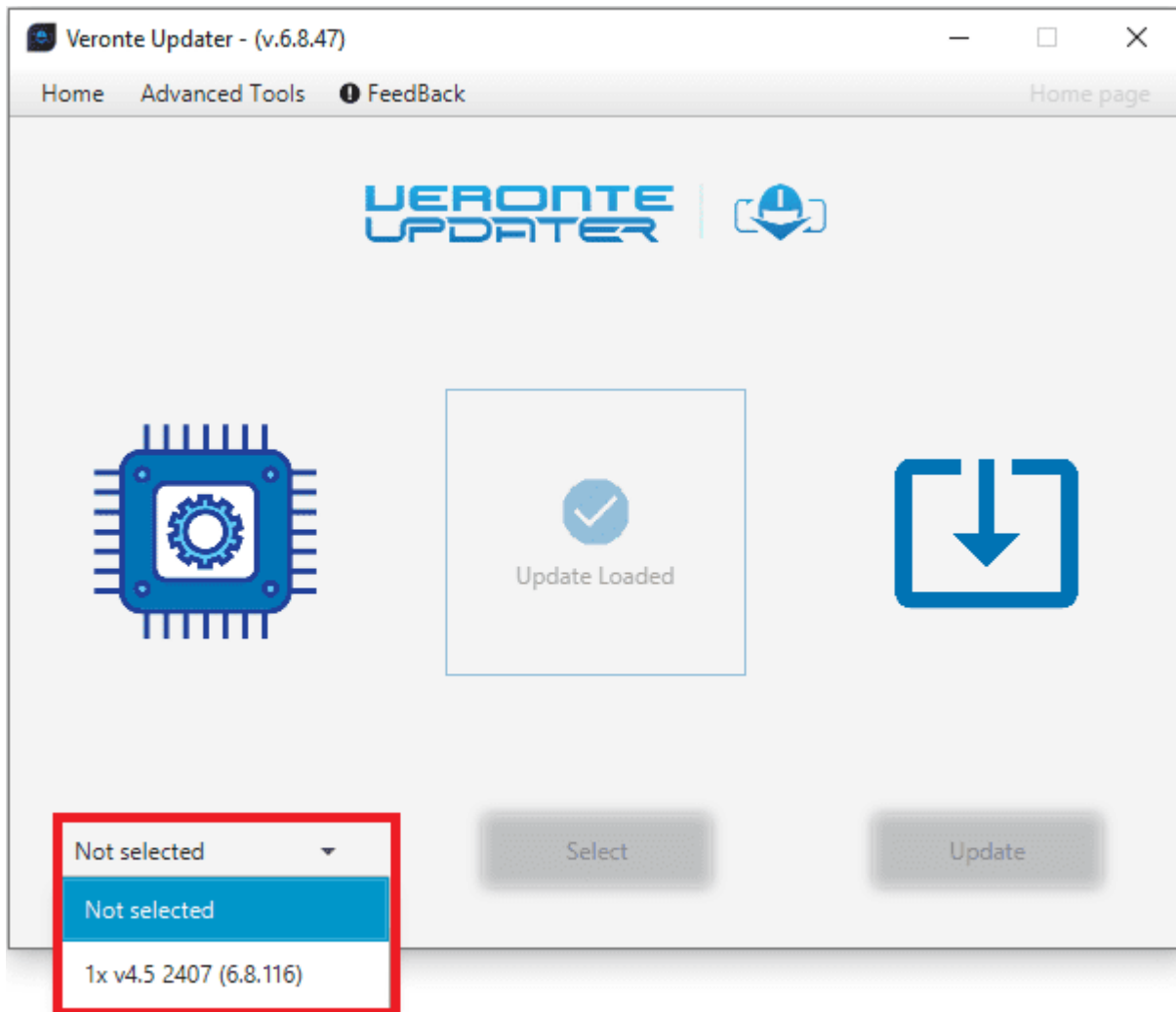


Fig. 3: **Selecting connected device**

2. Load the **.update** file.

There are two ways to do this, dragging the file to the **Drag** area or by using the **Select** button.

The latter option will open the following browser to select the **.update** file stored in the user's local storage:

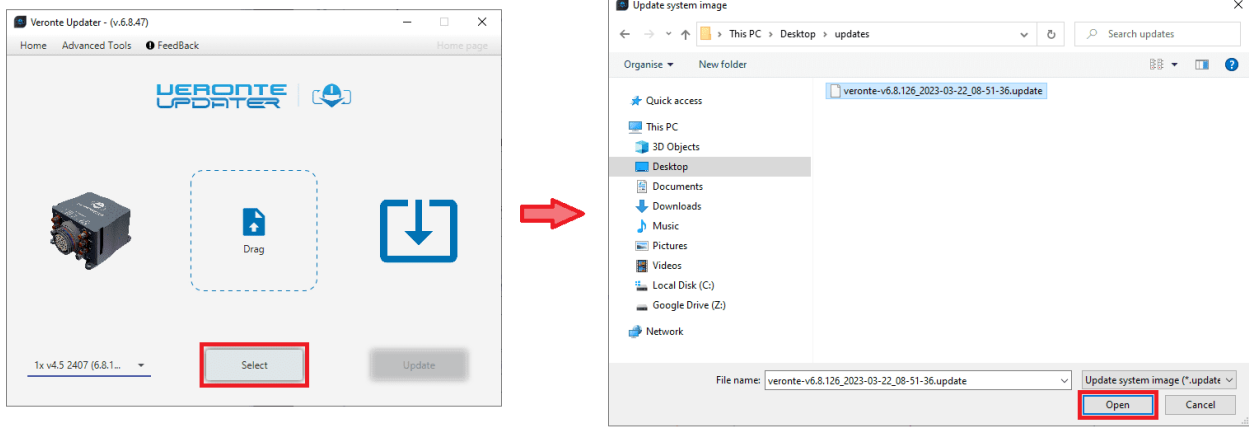


Fig. 4: Loading file

3. Once the .update file is loaded, click on **Update** to send the configuration to the device.

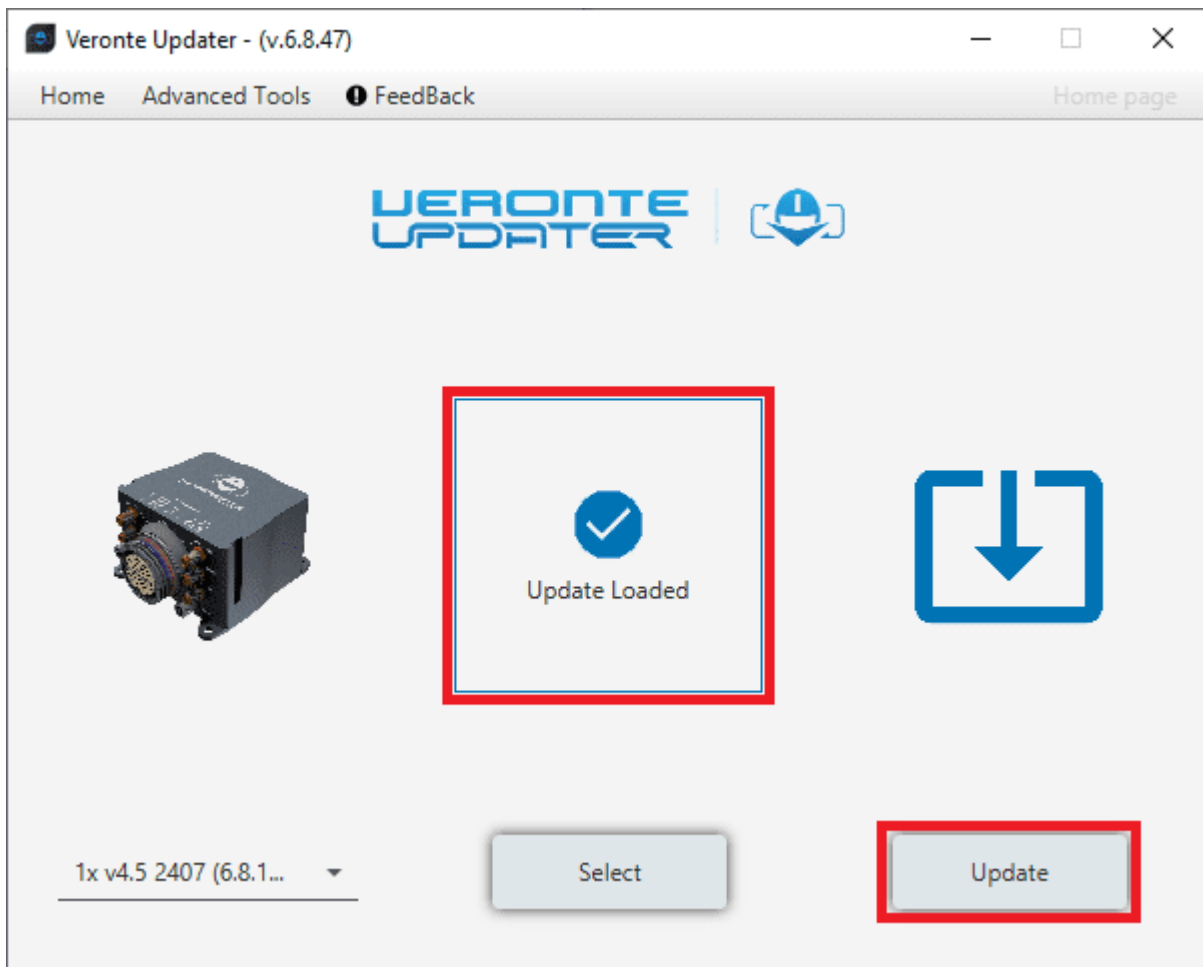


Fig. 5: Update loaded

4. * If the device is a **Veronte Autopilot 1x** with an **SD 8 GB** and the previous software version is **6.4 or lower**,

the following window will pop up:

Important: If the Autopilot 1x is intended to be simulated, this warning can be ignored.

However, if the autopilot is to be used for real flights, please send it to Embention, so that the SD card can be updated.

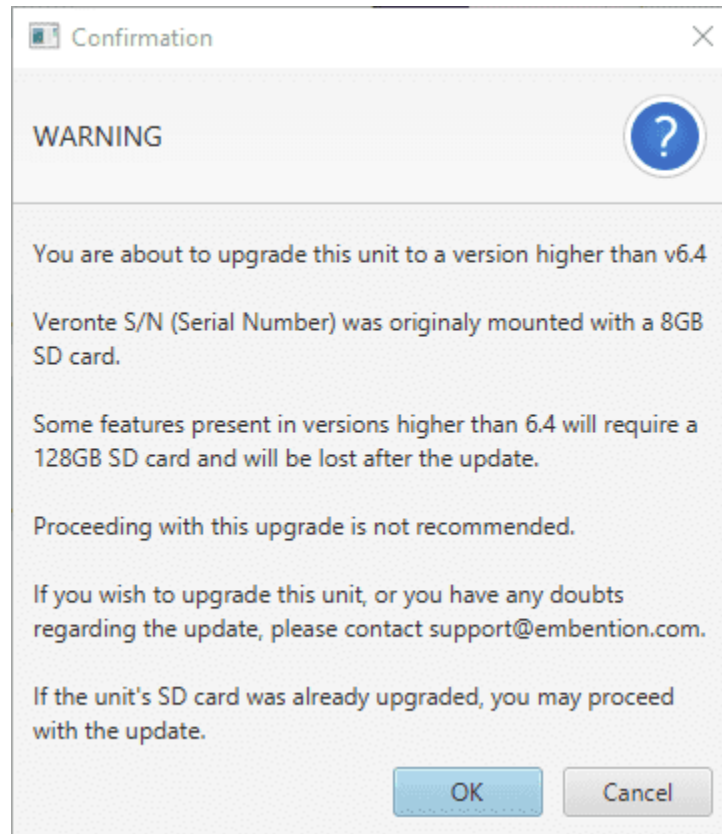


Fig. 6: SD warning message

5. * The following message will then be displayed, as updating a device will format it and a backup is the only way to recover previous configuration.

This configuration file will be needed later.

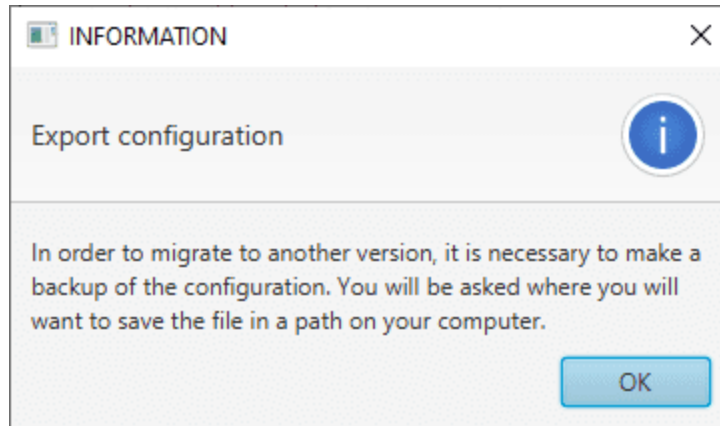


Fig. 7: Export configuration message

6. * Choose the folder where the backup will be stored as a **.ver** file:

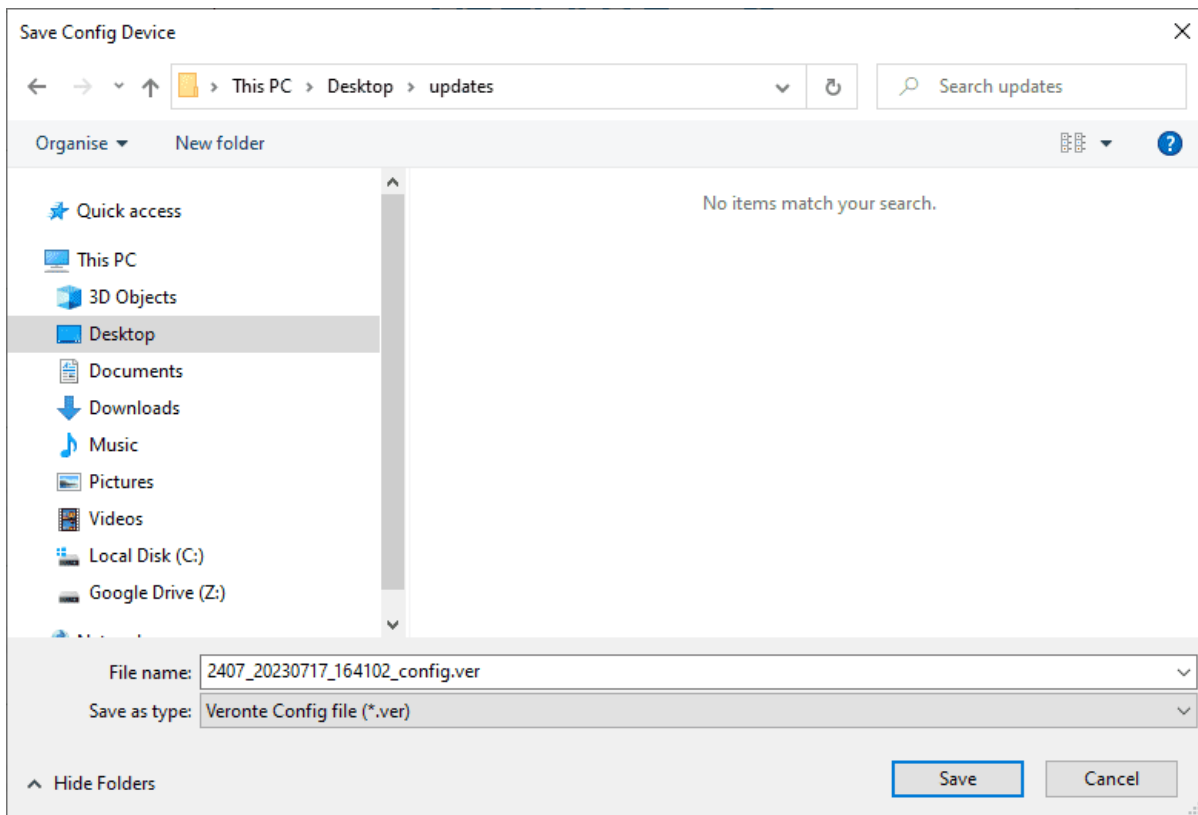


Fig. 8: Save .ver file

7. The update process will start, the following windows will show the progress:

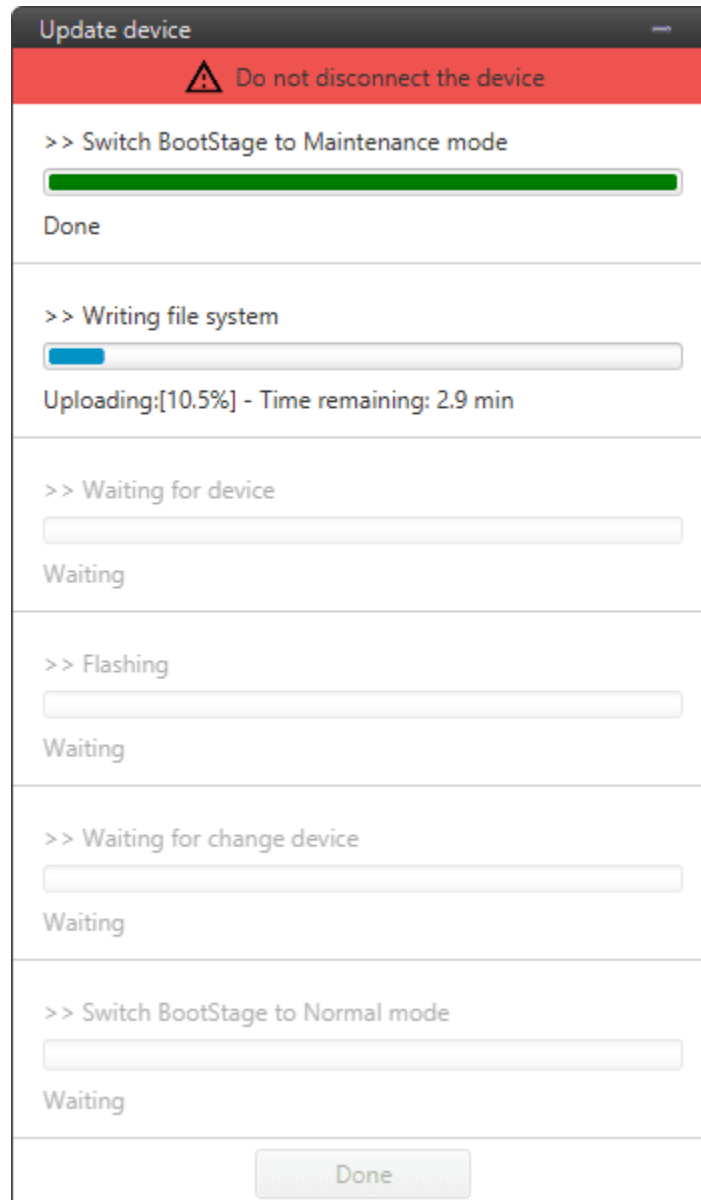


Fig. 9: Update device process

- When finished, click on **Done**:

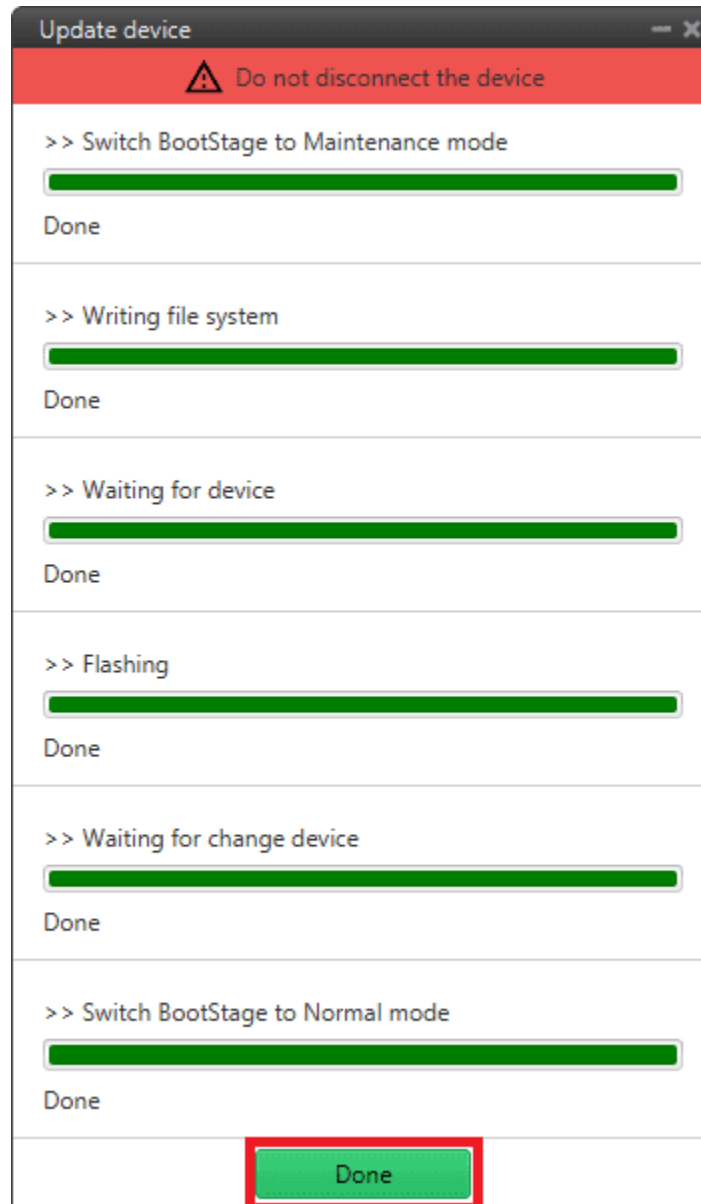


Fig. 10: Update device process finished

9. * Finally, upload the `.ver` file obtained in *step 6*.

Use the PDI Builder software for the updated device, in this case, the **1x PDI Builder**.

Open the app, select the unit and click **Upload PDI**.

Note: During the update the device has been formatted and consequently the 1x autopilot configuration has been deleted. Therefore **Veronte Link** will show it as **Loaded with errors** and **CFG: Failed load config**.

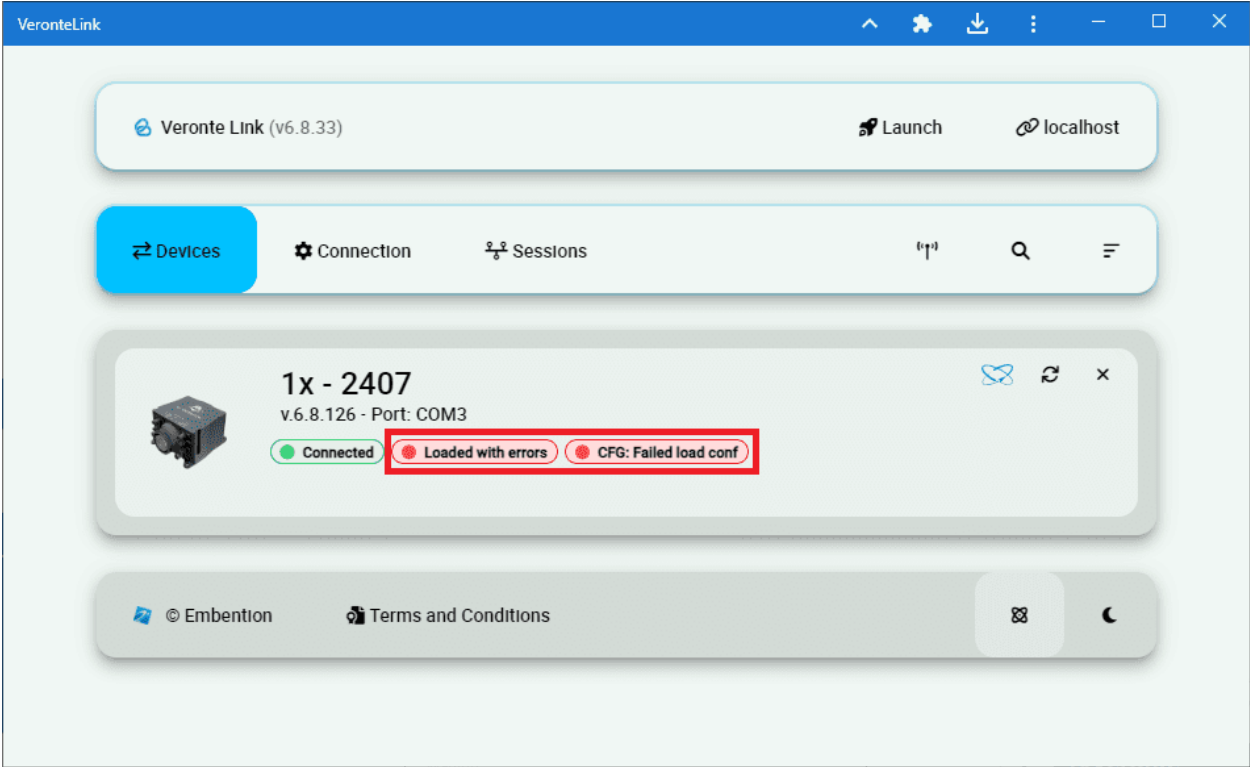


Fig. 11: Veronte Link - Loaded with errors

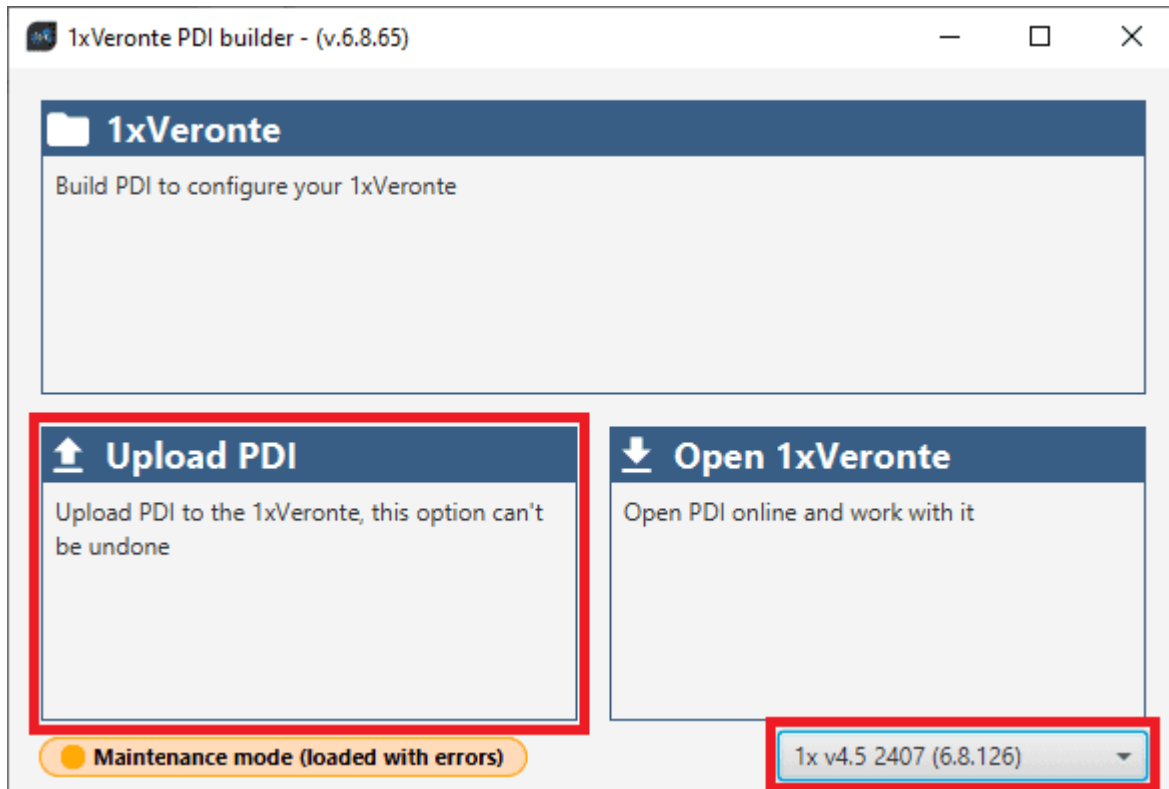


Fig. 12: 1x PDI Builder - Upload PDI

10. * Select the **.ver** file and click **open** to load it into Autopilot 1x.

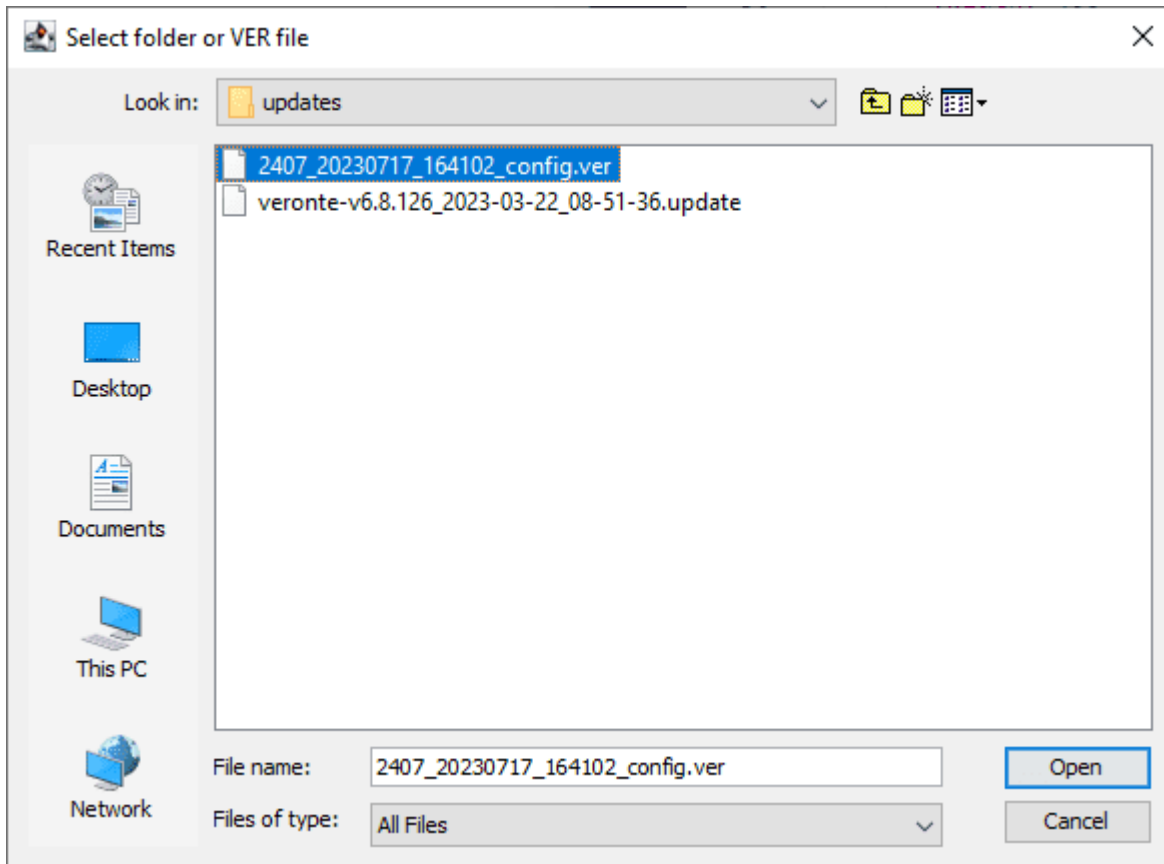


Fig. 13: 1x PDI Builder - Select .ver file

Autopilot 1x should then switch to **Normal mode** and **Ready** status:

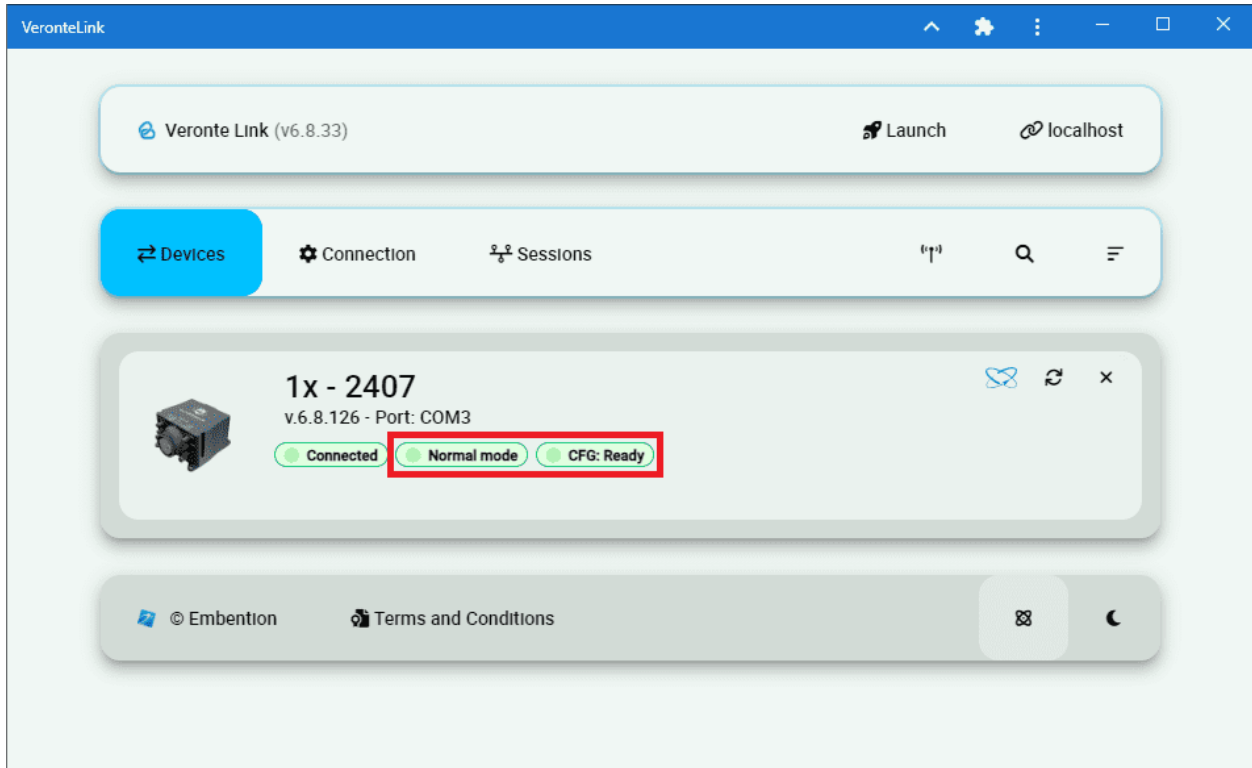


Fig. 14: Veronte Link - Normal mode and Ready

2.1.1 Advanced Tools

Together, the processes listed under the **Advanced Tools** tab, involve the entire update process described above, except for the *Flash Remote ID* which is not part of the upgrade process.

In other words, this allows the user to submit the device to only one of the processes that is carried out during the entire update process.

These are detailed below:

2.1.1.1 File system

By selecting this option, the file memory of the connected device will be prepared for the update process.

Simply, select the unit to be prepared and click **Prepare**:



Fig. 15: File system

The process will then start and the following windows will show the progress:

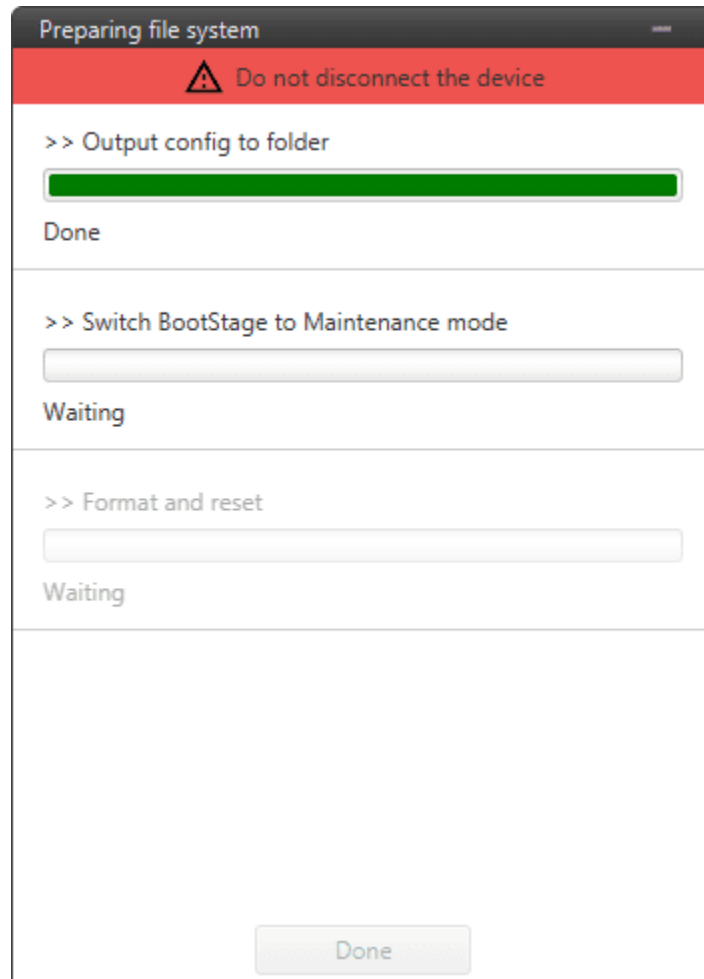


Fig. 16: File system process

When finished, click on **Done**:

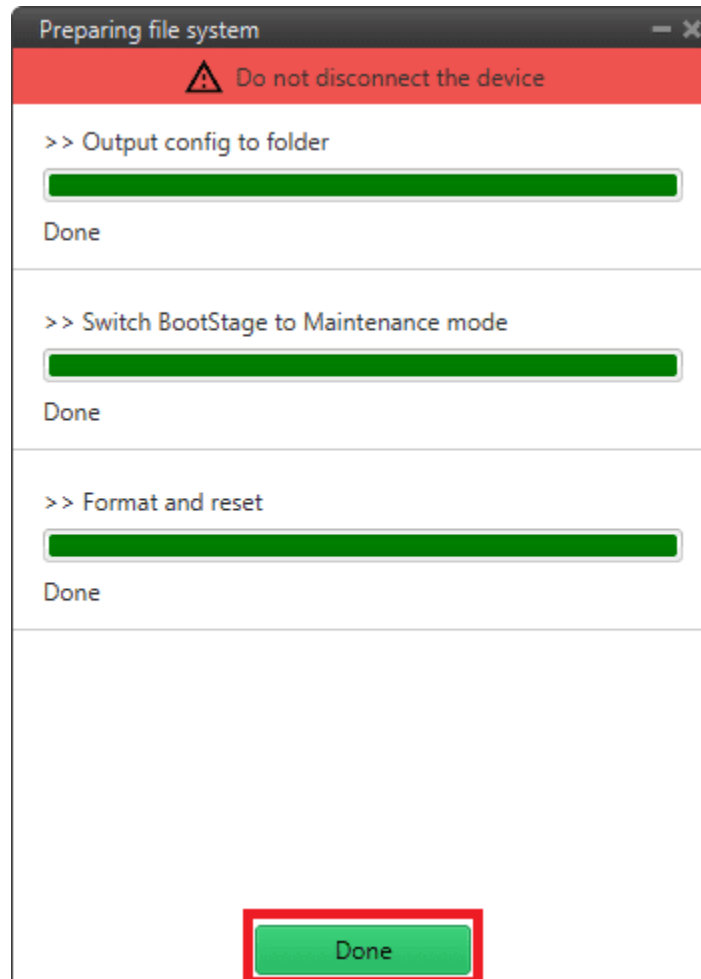


Fig. 17: File system process finished

2.1.1.2 Upload files

In this tab, the user can load the updating files to the corresponding **slots** of the connected device.

Note: The available slots in memory are displayed in the drop-down menu under the unit selection drop-down menu.

There are two ways to do this:

1. Doing it the same way as in the **Home** tab, i.e. selecting a `.update` file and letting **Veronte Updater** internally place each `.bin` file contained in the `.update` file into each slot.
For instance, if slot 0 is selected, one of the `.bin` files will be placed here and the other in the next slot, slot 1.
2. Selecting a slot and uploading the first `.bin`, then selecting the next slot and uploading the second `.bin` file.

In this example, the first option has been done:

- First, select the slot to locate the `.update` file:



Fig. 18: Upload files - Slot selection

- Secondly, drag the file to the **Drag** area or click on **Select** and select it from the local storage:

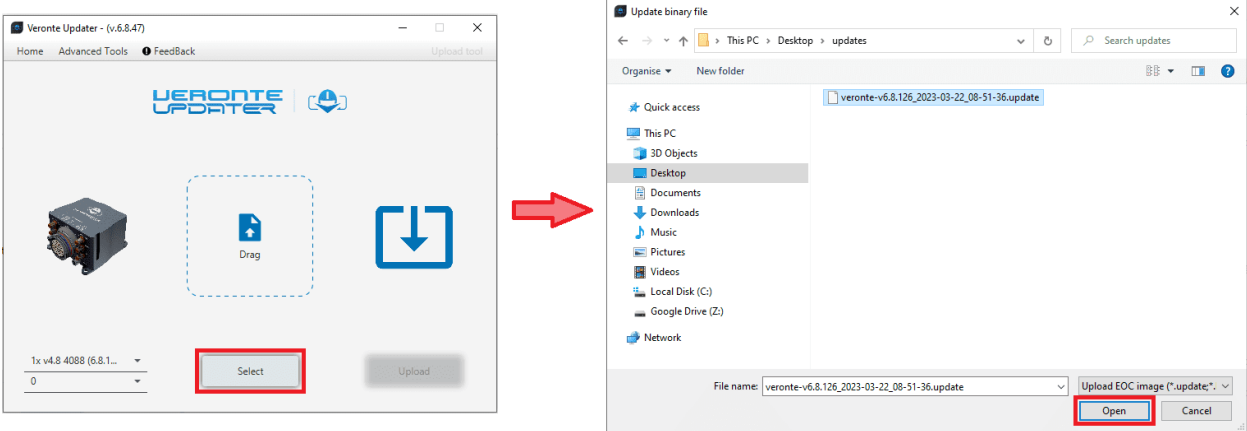


Fig. 19: Upload files - Loading file

- Once the .update file is loaded, click on **Update** to send the configuration to the device:

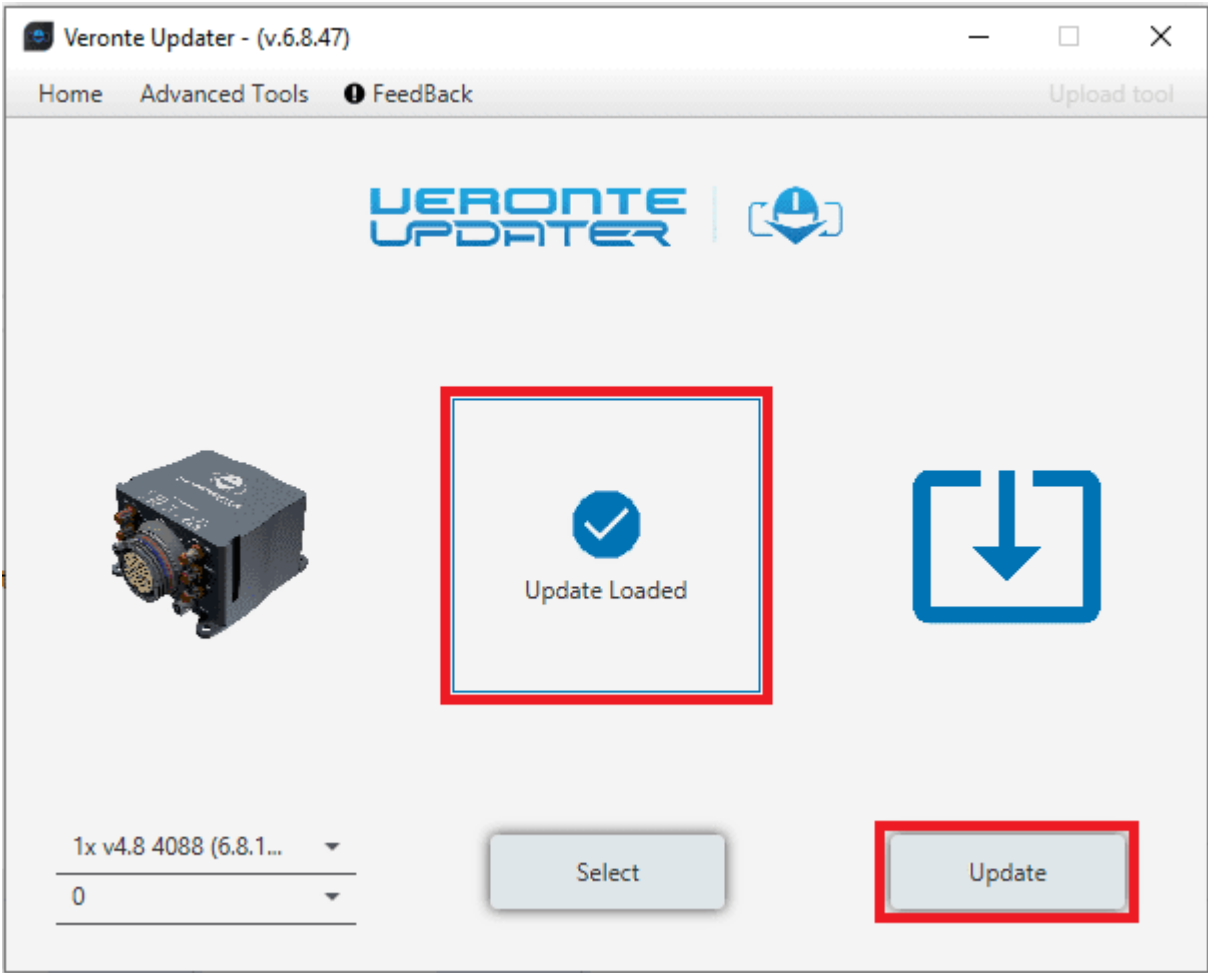


Fig. 20: Upload files - Update loaded

- The process will start and the following windows will show the progress:

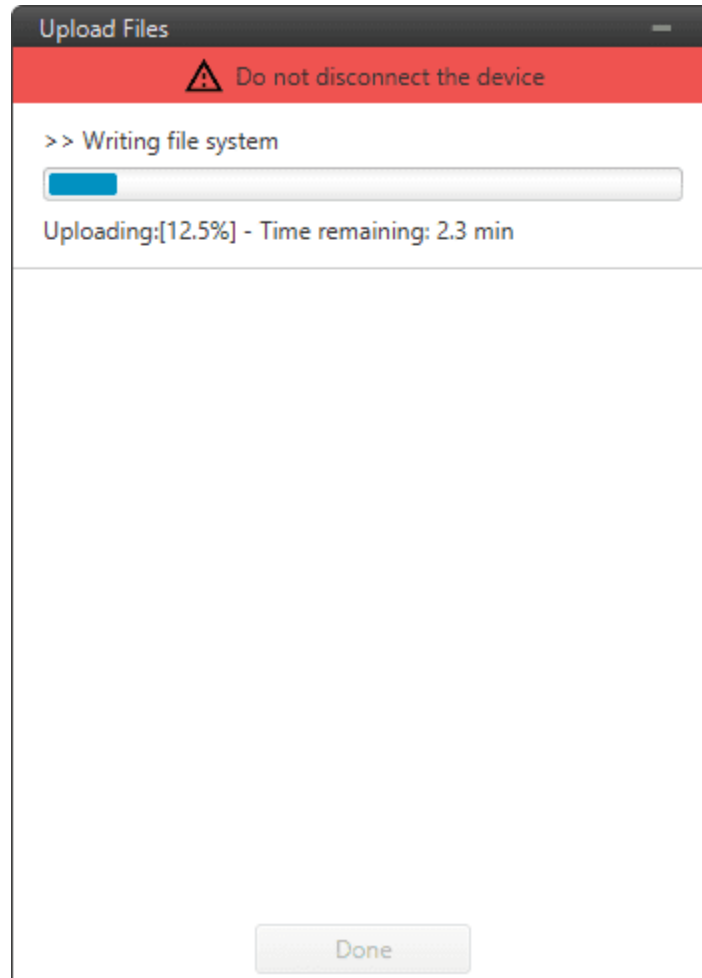


Fig. 21: Upload files process

- When finished, click on **Done**:

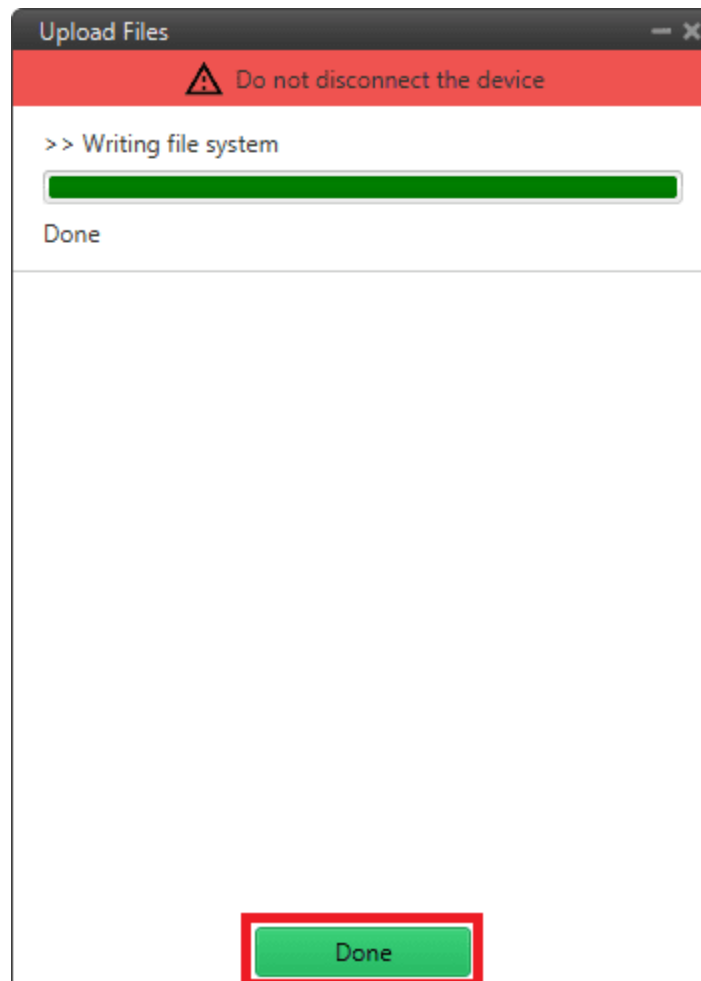


Fig. 22: Upload files process finished

2.1.1.3 Flash tool

Finally, this tab will flash the device. That is, the connected device is reinitialized and the files previously loaded into memory (in the slots) will be uploaded to the connected device.

Simply choose the desired unit to be flashed and the slot where the .update file has been located and click **Flash**:



Fig. 23: Flash tool

The flashing process is quite quickly, finally click on **Done**:

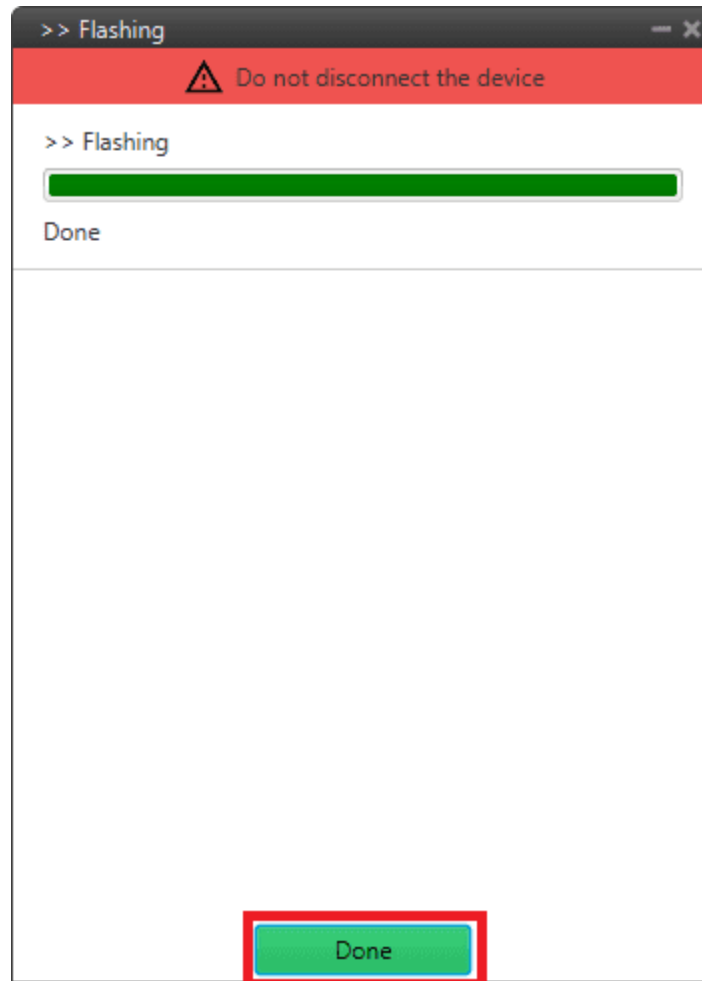


Fig. 24: Flash tool process

2.1.1.4 Flash Remote ID

Warning: THIS IS NOT PART OF THE UPGRADE PROCESS.

Whit this option, users can update the Remote ID product. For more information about this product, please contact sales@embention.com.

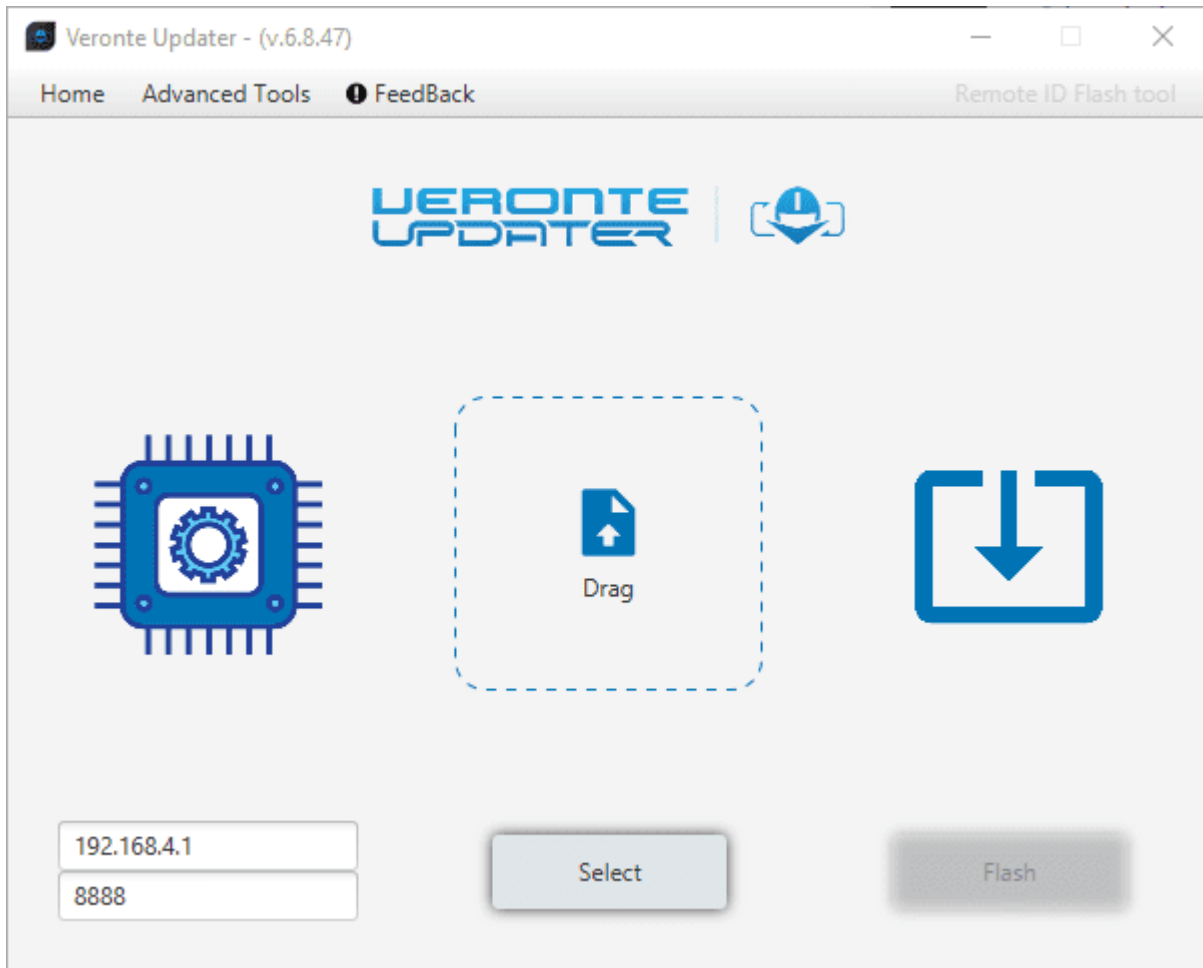


Fig. 25: Flash Remote ID