
Veronte FDR

Release 6.12

Embention

2024-06-14

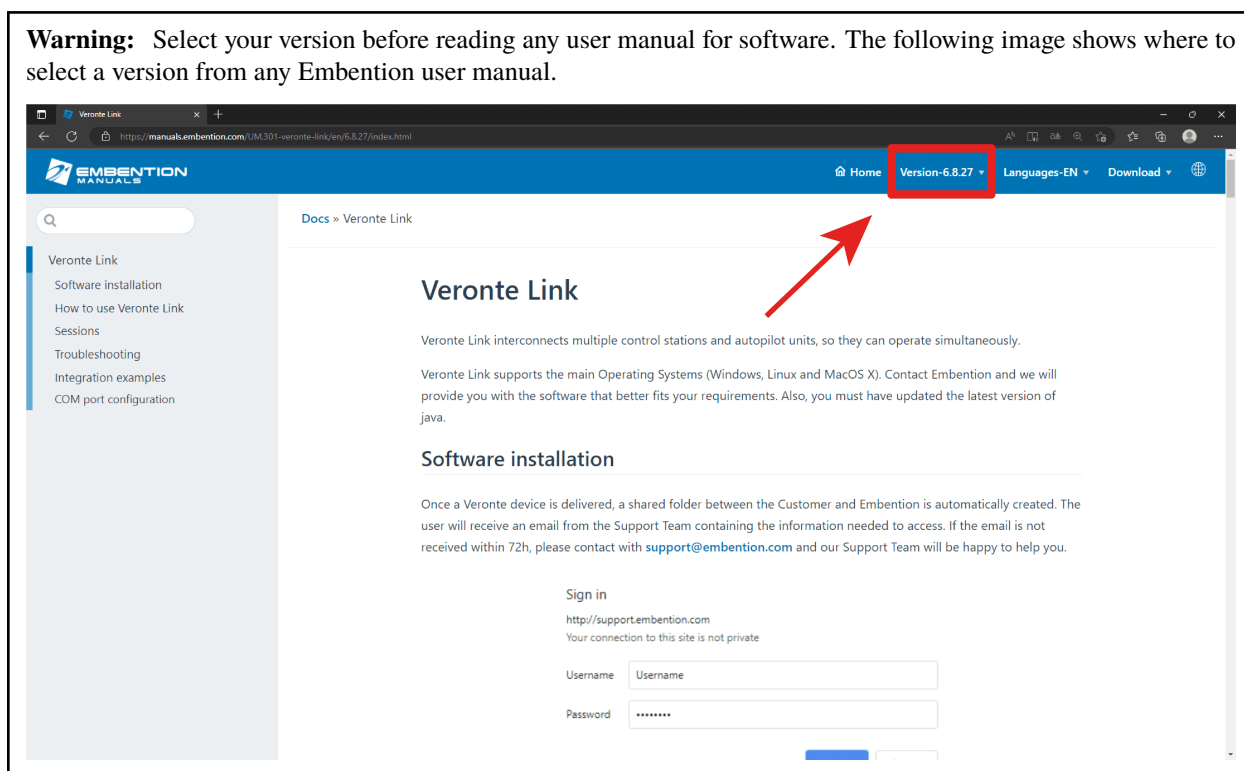
CONTENTS

- 1 Quick Start 3**
 - 1.1 System Requirements 3
 - 1.2 First Steps 4
- 2 Operation 7**
 - 2.1 Graphical User Interface 8
 - 2.1.1 Log Files 12



Veronte FDR is the web page application to download log files from Veronte autopilots.

Warning: Select your version before reading any user manual for software. The following image shows where to select a version from any Embention user manual.



QUICK START

Veronte Autopilot 1x and **4x** register automatically the desired information in register files, named as “log files”.

Note: Fast logs are related to the same session. In addition, each fast log entry will be appended to the end of the previous one.

Veronte FDR is the application used to download the log files from Veronte autopilots.

These log files allow the user to create mission reports, that contain basic information (like mission duration, UAV ID, configuration name, date, etc.) and any relevant events, along with a timestamp.

This information can be configured reading the [Telemetry](#) section of the **1x PDI Builder** user manual.

1.1 System Requirements

Before executing this software, users should check the following sections with the minimum and recommended PC hardware requirements.


Minimum requirements

- CPU: Intel Core i5-8365UE
- RAM: 8 GB DDR4
- STO: 256 GB SSD

Recommended requirements

- CPU: 12th Gen Intel(R) Core(TM) i7-12700H 14 cores up to 4,70 GHz
- RAM: 32 GB
- STO: 1 TB SSD M.2 NVMe PCIe

1.2 First Steps

To access **Veronte FDR** simply click on the following link: <https://v612-fdr.embention.net/>. Users can work with it from the **browser** or **download** it to the PC clicking on  in the browser bar:

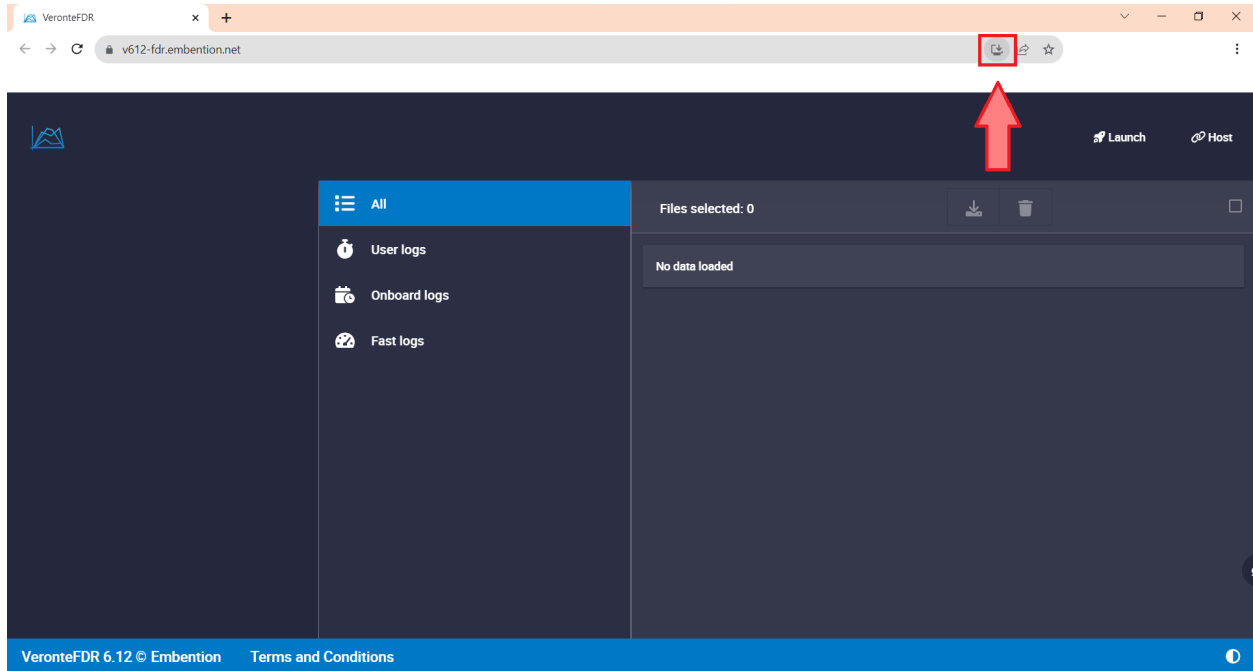


Fig. 1: Veronte FDR in browser

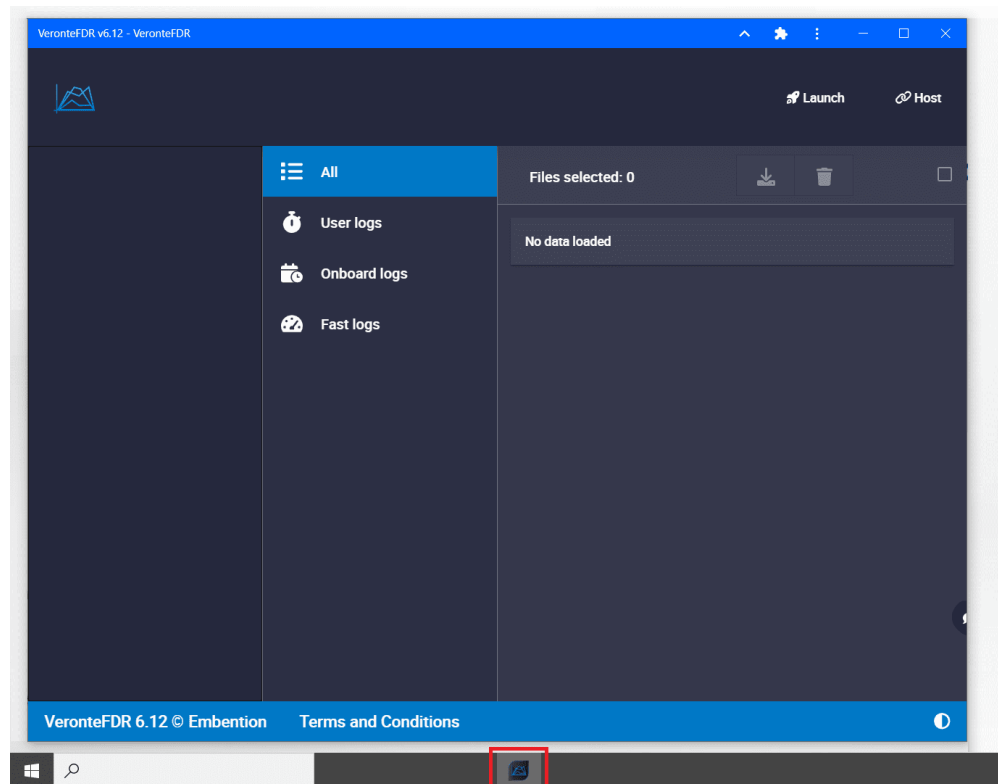


Fig. 2: Veronte FDR installed on PC

As it is a web application, updates will be done on their own and will appear in the changelog.

OPERATION

First of all, connect the **Autopilot 1x** or **4x** to the computer using **Veronte Link**. Read the [Veronte Link user manual](#) to know more.

Once the autopilot has been connected, **set it to maintenance mode**. The easiest way to do it is opening **1x PDI Builder**, selecting the device (1) and clicking on the status bar (2).

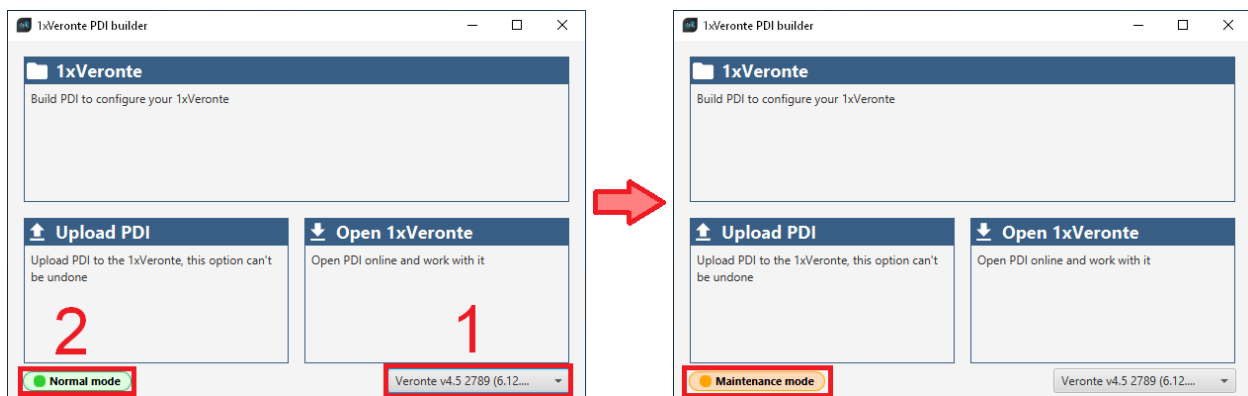


Fig. 1: Setting maintenance mode

Warning: The error message below will pop up when trying to download log files if the autopilot is not properly set to maintenance mode:

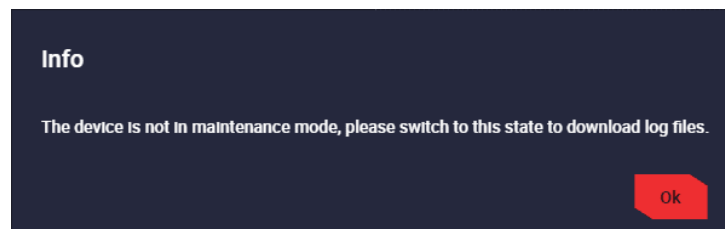


Fig. 2: Maintenance mode - Warning panel

To know more about maintenance mode, read [1x user manual](#) -> [Maintenance mode](#), which also explains other ways to set the autopilot to maintenance mode.

2.1 Graphical User Interface

Open **Veronte FDR** and a similar image to the following one will be displayed:

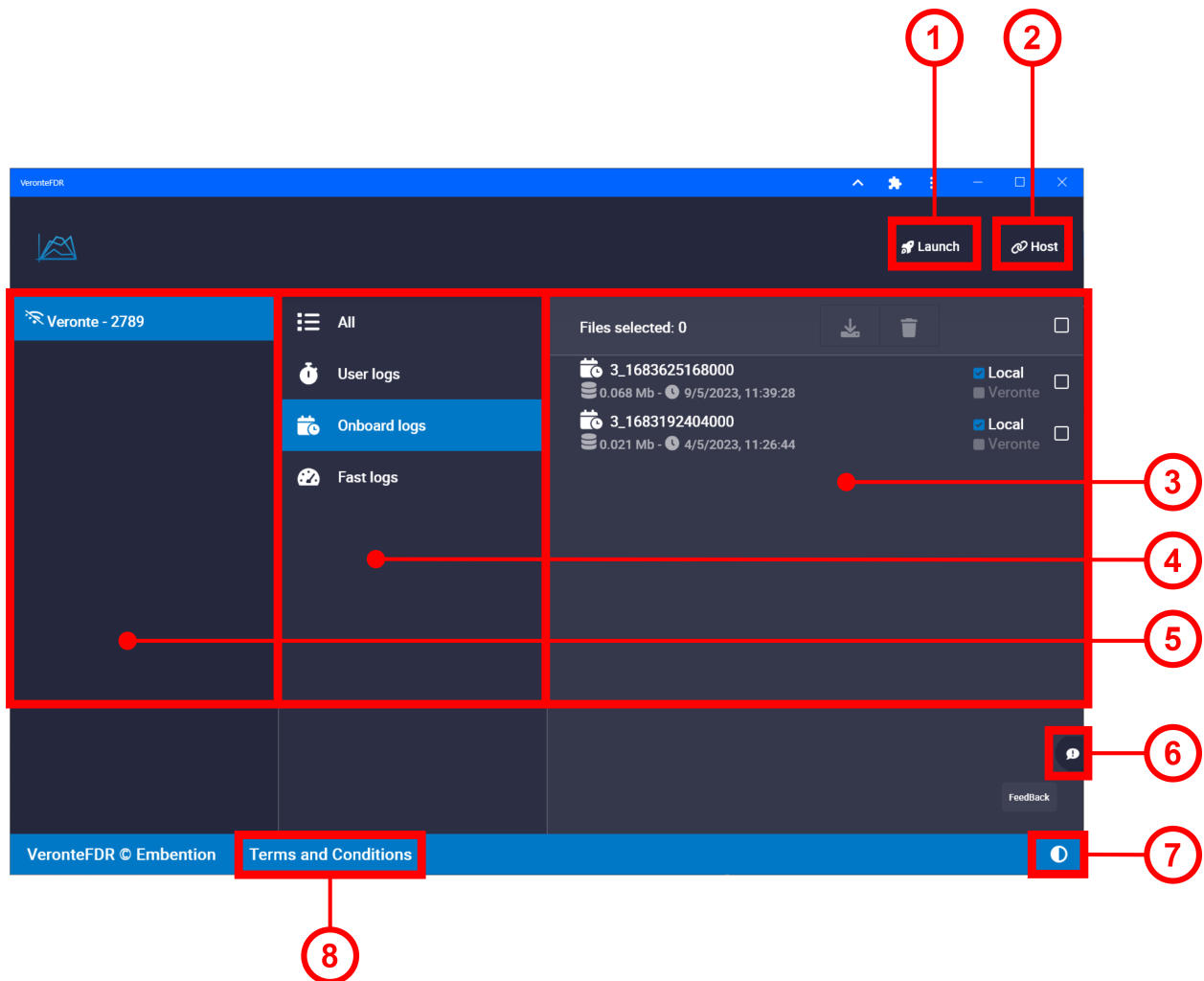


Fig. 3: Veronte FDR - Sections

1. **Launch.** Users can access **Veronte Ops** and **Veronte Link** by pressing this button.
Read the [Veronte Link manual](#) or the [Veronte Ops manual](#).
2. **Host.** It allows connecting to the local IP address or to another desired IP address.
To do it, click on **Add new VLink Host** and write the IP address.

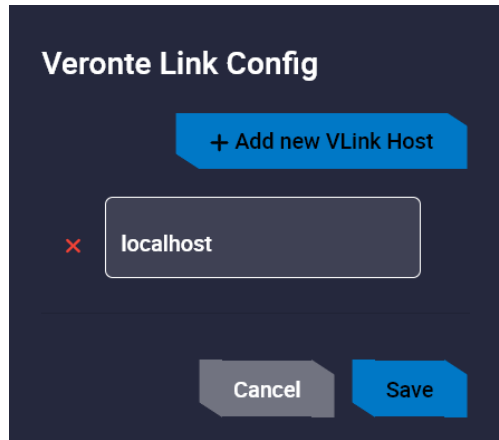


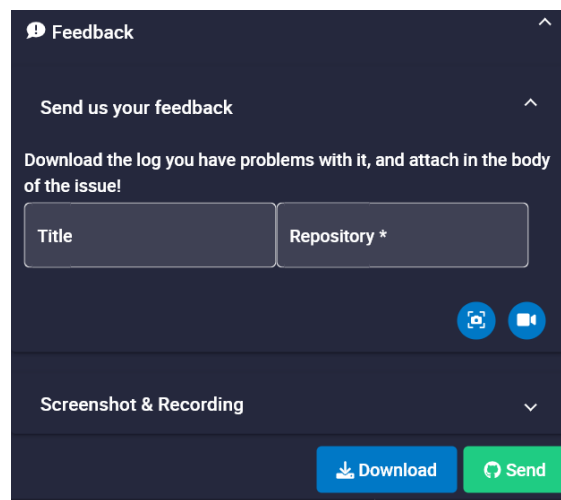




Fig. 4: Host window

3. *Log files panel*. As shown in the image, here all records of the log type selected in **Type of logs panel** are displayed in a list.
4. **Type of logs panel**. Select a log type to display them.
Select **All** to display all types of logs. To know more about logs, read [1x PDI Builder manual -> Telemetry](#).
5. **Autopilots panel**. Autopilots can be connected, indicated with ; or disconnected with .
6. **Feedback**. After clicking here, the following window will pop up:



Users can report a problem they have encountered by creating an issue in their own '**Joint Collaboration Framework**'.

In addition, clicking on  will take a snapshot or  will record a video, which can be added as explanatory information to the issue. When a snapshot or video is taken, it can be visualized in the *Screenshot & Recording* tab.

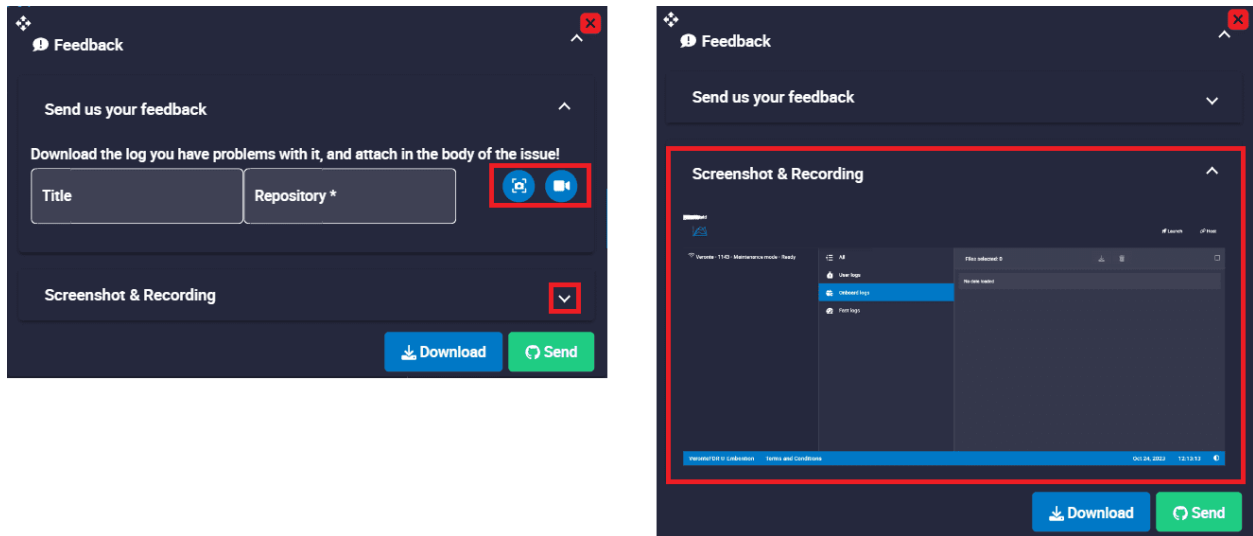


Fig. 5: Screenshot & Recording tab

Note: The user's 'Joint Collaboration Framework' is simply a Github repository for each customer.

In case of having any questions about this, please see [Joint Collaboration Framework manual](#) or contact sales@embention.com.

Clicking on the **Download** button downloads a zipped folder with the data of the operation to easily identify the problem. It is advisable to attach this folder when creating the issue.

Finally, by clicking on the **Send** button, a Github window will open in the browser with an issue. This issue is created in the repository indicated before with the title that has been defined.

Find below an example of the creation of a feedback:

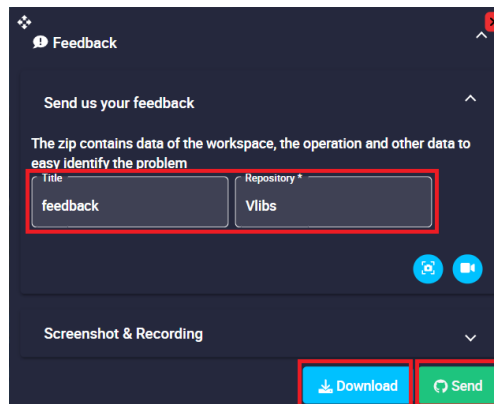


Fig. 6: Feedback example - Feedback menu

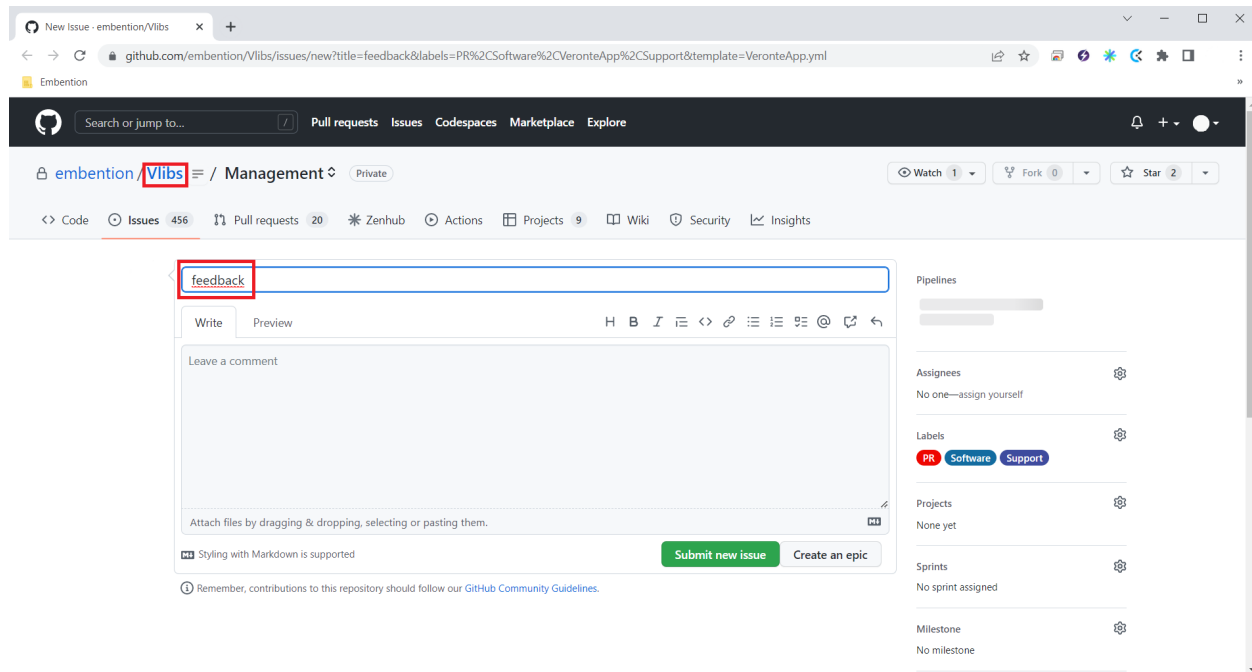


Fig. 7: Feedback example - Issue created in Github

7. **Light/dark mode.** It changes the display mode of the interface.
8. **Terms and Conditions.** Users can consult the End User License Agreement (EULA).

2.1.1 Log Files

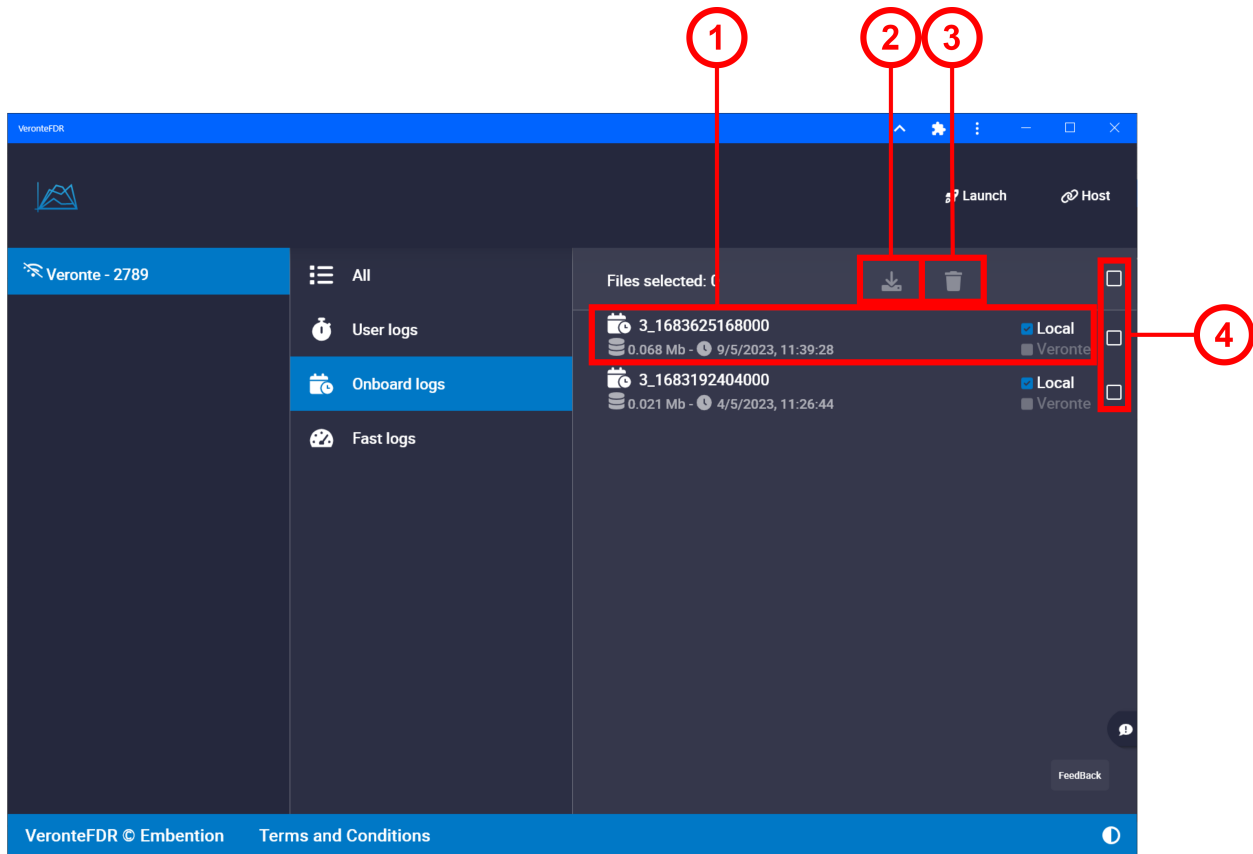


Fig. 8: Logs Interface

1. **Register.** Each register has date and hour creation to be identified. They have two checks:

- Local: logs located in computer.
- Veronte: logs located in **Autopilot 1x**.

2. **Download.** Selected log files can be downloaded as binary files clicking on or as csv clicking on .

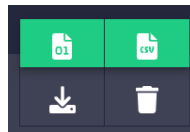


Fig. 9: Download options

The download progress is indicated by a progress bar below the window, where it can be canceled by pressing on .



Fig. 10: Download progress bar

Warning: If the connection with the autopilot is lost, an error may occur while downloading the files. In this case, the message below will pop up and the user must repeat the downloading process.

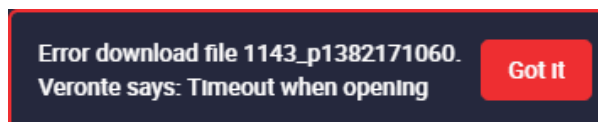




Fig. 11: Download - Error message

3. **Delete.** Files located in the autopilot can be deleted clicking on . Those located in the computer can be deleted on .

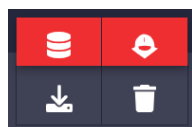


Fig. 12: Delete options

Note: The user must confirm these actions by accepting a confirmation panel. Panels below correspond to the confirmation of the **local file deletion** and the **autopilot file deletion** respectively:

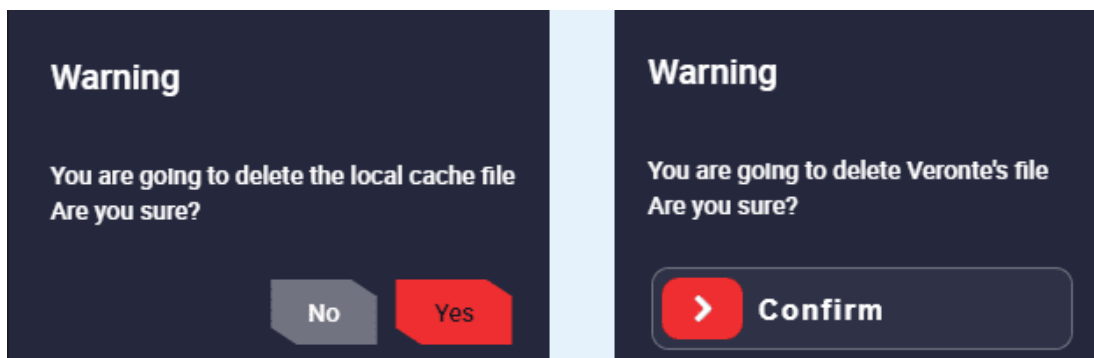


Fig. 13: Delete - Warning Panels

4. **Selection boxes.** They allow to select logs to download or edit them.